

BioCode® Analyte Specific Reagents* (ASRs) for Fungal Pathogens

Molds

BioCode® *Aspergillus flavus* BMB-Probe

44-B0327-B1

For detection of Aspergillus flavus.

BioCode® *Aspergillus fumigatus* BMB-Probe

44-B0325-B1

For detection of Aspergillus fumigatus.

BioCode® *Aspergillus niger* BMB-Probe

44-B0328-B1

For detection of Aspergillus niger.

BioCode® *Aspergillus terreus* BMB-Probe

44-B0326-B1

For detection of Aspergillus terreus.

BioCode® *Cunninghamella bertholletiae* BMB-Probe

44-B0329-B1

For detection of Cunninghamella bertholletiae.

BioCode® *Fusarium oxysporum* BMB-Probe

44-B0336-B1

For detection of Fusarium oxysporum.

BioCode® *Fusarium solani* BMB-Probe

44-B0337-B1

For detection of Fusarium solani.

BioCode® *Mucor indicus* BMB-Probe

44-B0330-B1

For detection of Mucor indicus.

BioCode® *Pneumocystis jirovecii* BMB-Probe

44-B0335-B1

For the detection of Pneumocystis jirovecii.

BioCode® *Rhizomucor* spp. BMB-Probe

44-B0331-B1

For detection of Rhizomucor spp.

BioCode® *Rhizopus microsporus* BMB-Probe

44-B0333-B1

For detection of Rhizopus microsporus.

BioCode® *Rhizopus oryzae* BMB-Probe

44-B0334-B1

For detection of Rhizopus oryzae.

BioCode® *Rhizopus* spp. BMB-Probe

44-B0332-B1

For detection of Rhizopus spp.

BioCode® *Scedosporium apiospermum* BMB-Probe

44-B0338-B1

For detection of Scedosporium apiospermum.

BioCode® *Scedosporium prolificans* BMB-Probe

44-B0339-B1

For detection of Scedosporium prolificans.



* Analyte Specific Reagent. Analytical and performance characteristics have not been established.

Applied **BioCode**

BioCode[®] Analyte Specific Reagents* (ASRs) for Fungal Pathogens

Yeasts

BioCode[®] *Candida albicans* BMB-Probe

44-B0343-B1

For detection of *Candida albicans*.

BioCode[®] *Candida auris* BMB-Probe

44-B0344-B1

For detection of *Candida auris*.

BioCode[®] *Candida dubliniensis* BMB-Probe

44-B0345-B1

For detection of *Candida dubliniensis*.

BioCode[®] *Candida glabrata* BMB-Probe

44-B0346

For the detection of *Candida glabrata*.

BioCode[®] *Candida guilliermondii* BMB-Probe

44-B0347-B1

For detection of *Candida guilliermondii*.

BioCode[®] *Candida krusei* BMB-Probe

44-B0341-B1

For detection of *Candida krusei*.

BioCode[®] *Candida lusitanae* BMB-Probe

44-B0348-B1

For the detection of *Candida Lusitanae*.

BioCode[®] *Candida parapsilosis* BMB-Probe

44-B0349-B1

For detection of *Candida parapsilosis*.

BioCode[®] *Candida tropicalis* BMB-Probe

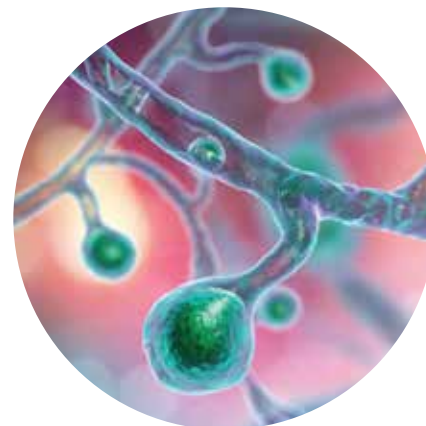
44-B0350-B1

For the detection of *Candida tropicalis*.

BioCode[®] *Cryptococcus spp.* BMB-Probe

44-B0351

For the detection of *Cryptococcus spp.*



Dimorphic Fungi

BioCode[®] *Blastomyces dermatitidis* BMB-Probe

44-B0354-B1

For the detection of *Blastomyces dermatitidis*

BioCode[®] *Histoplasma capsulatum* BMB-Probe

44-B0352-B1

For detection of *Histoplasma capsulatum*.

BioCode[®] *Coccidioides immitis/posadasii* BMB-Probe 44-B0353-B1

For detection of *Coccidioides immitis/posadasii*.

* Analyte Specific Reagent. Analytical and performance characteristics have not been established.

Applied BioCode

BioCode® Analyte Specific Reagents* (ASRs) for Fungal Pathogens

Primer Pairs

BioCode® Fungal ITS2 Primer Pair

44-P0001-B2

Biotinylated primer pair for the amplification of ITS2 region of fungal DNA.

BioCode® *Pneumocystis jirovecii* Primer Pair

44-P0003 -B2

*Biotinylated primer pair for the amplification of the mitochondrial large subunit (mtLSU) of *Pneumocystis jirovecii*.*

* Analyte Specific Reagent. Analytical and performance characteristics have not been established.

Internal Control Sets

For Laboratory Use

BioCode® DNA-IC Pack

64-D0001

Contains:

BioCode® DNA-IC Primer Pair

BioCode® DNA-IC BMB Probe

BioCode® DNA-IC

General Purpose Reagents

For Laboratory Use

BioCode® Master Mix A

14M0001-B2

BioCode® SA-PE Mix Pack

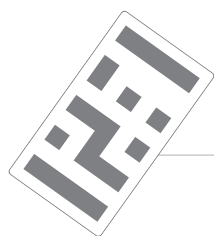
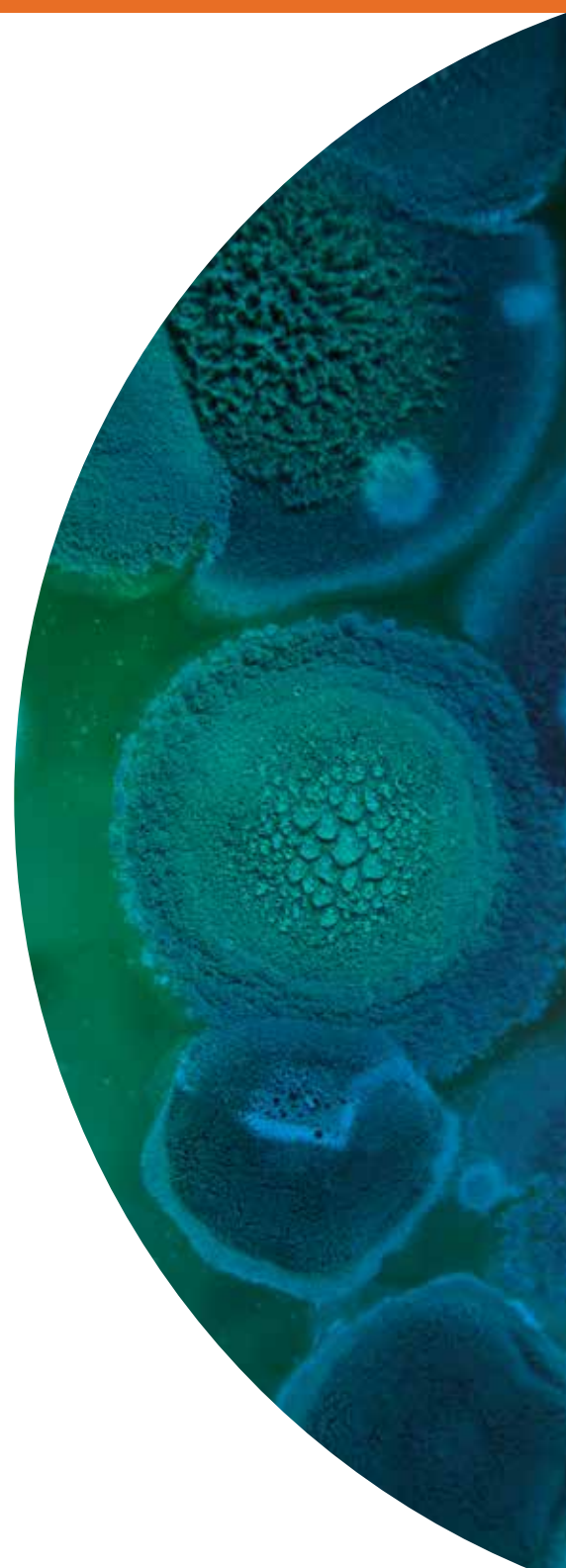
63-S0001

BioCode® BMB Diluent

44-B0324-B4

BioCode® Buffer A

44-B0003



011000010110001001100011

Applied BioCode